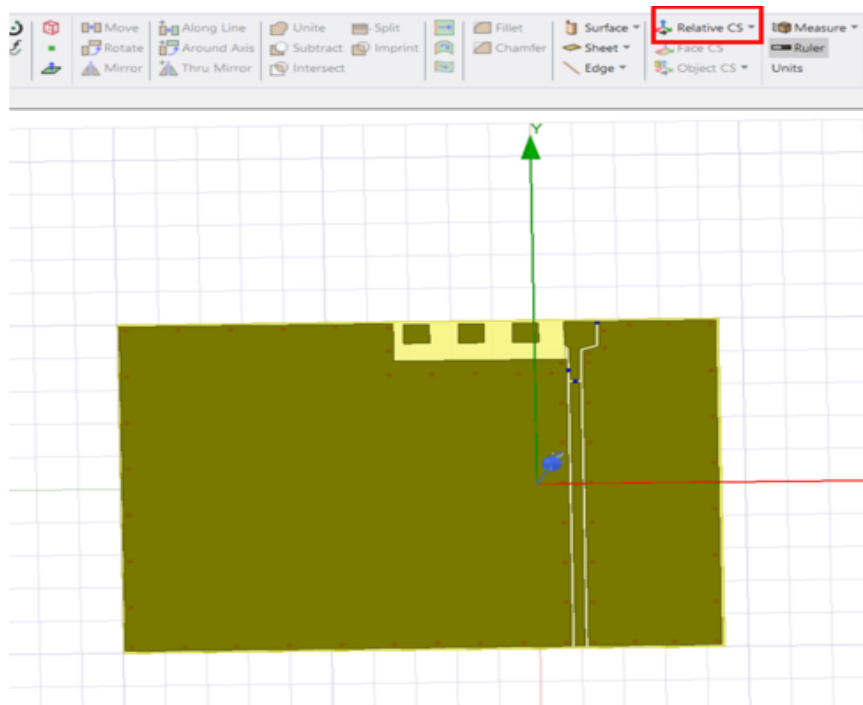
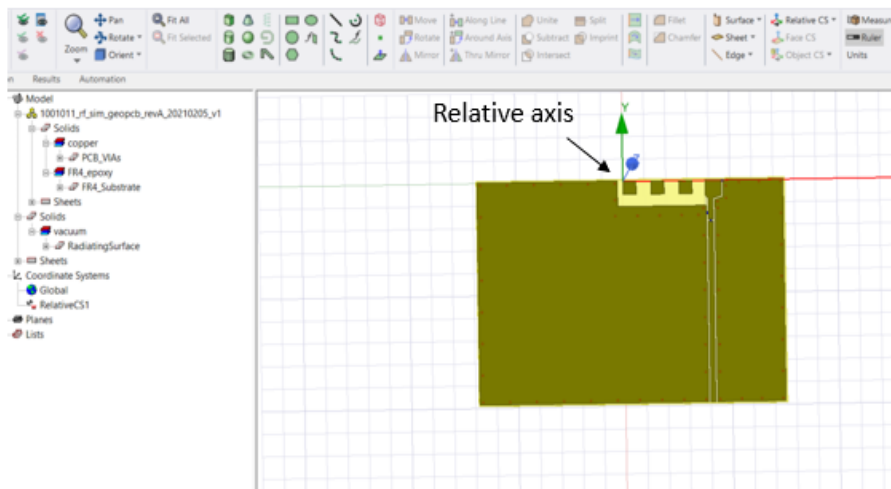


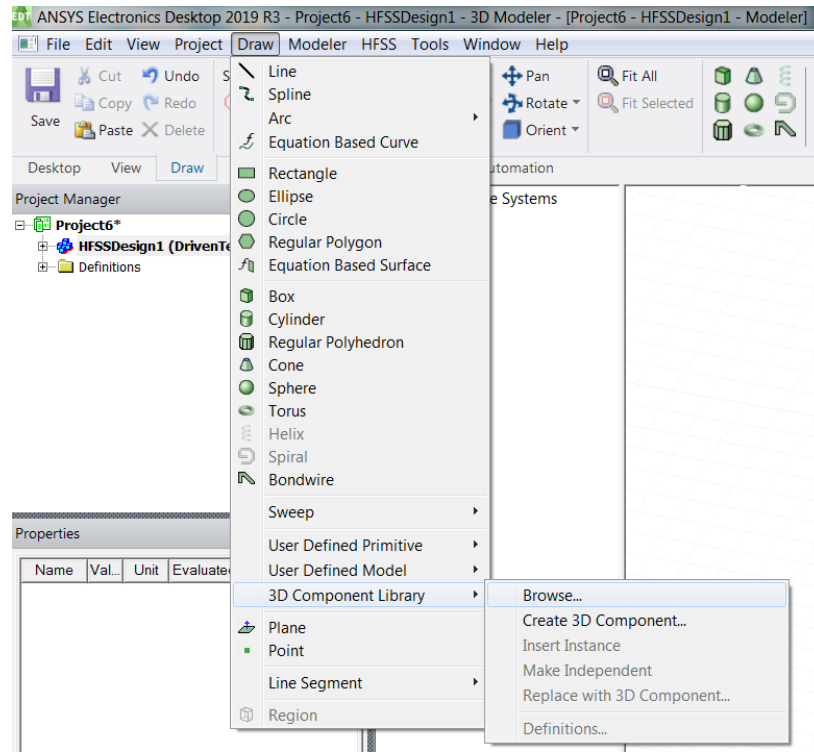
Accessing HFSS 3D component files

After saving the 3D component files, please follow the listed steps to get the HFSS files running:

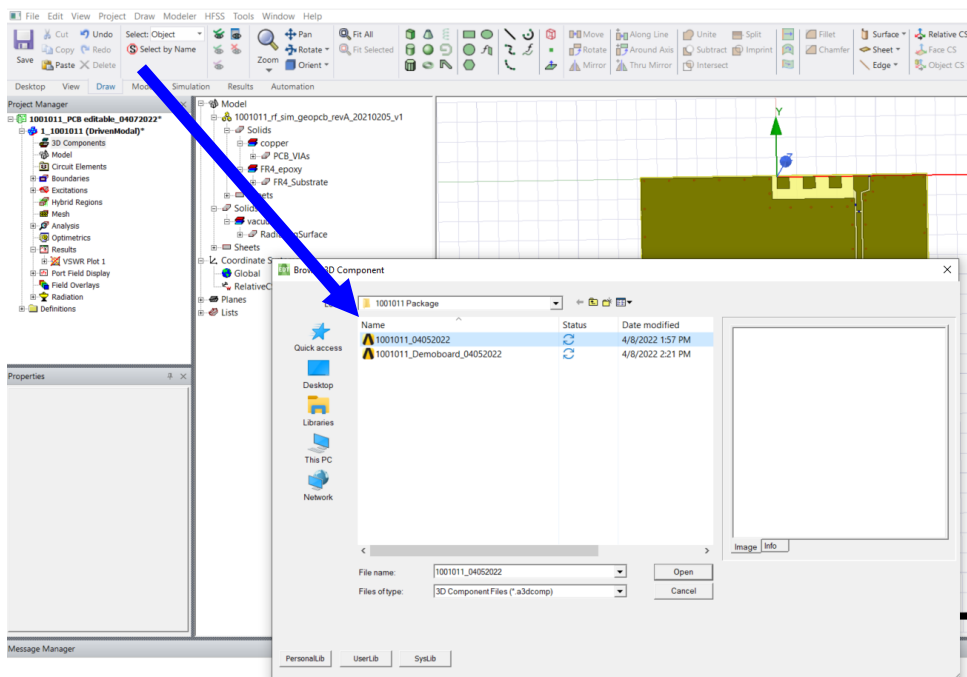
Step 1 (optional): Place a relative axis at the desired location (on top of PCB where it will be considered as $Z=0$ (antenna PADs plane) while importing the antenna. Antenna PADs must be placed exactly on top of the PCB.



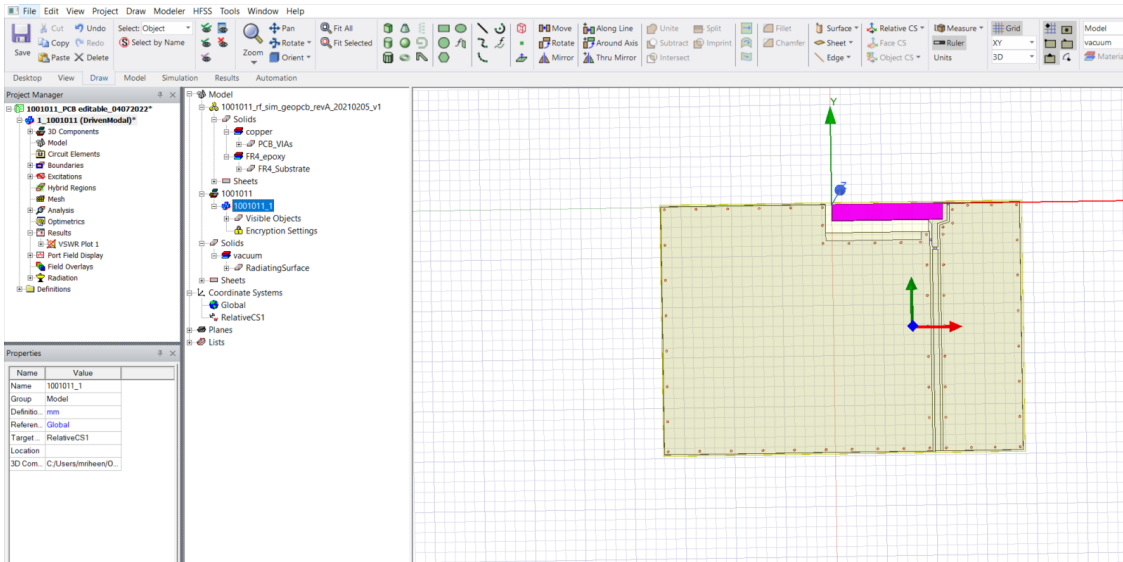
Step 2: Go to Draw → 3D Component Library → Browse. Select the component file from the location you saved the file.



Step 3: Select the 3D component file that needs to be simulated and open the file. In this case we are using standard antenna: **1001011**

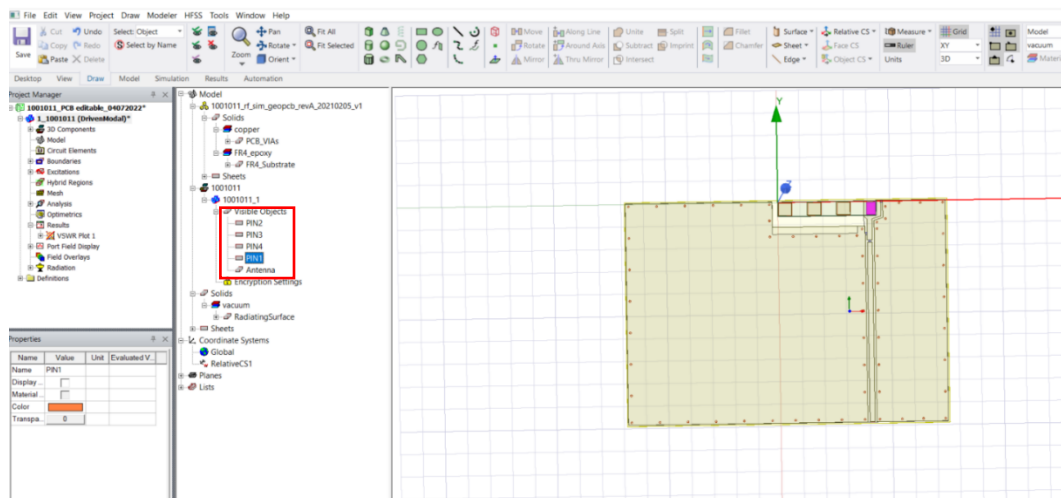


Step 4: After the password is entered, the component file opens up. Antenna PADs will be exactly at the top of copper (Z=0).



Step 5: Adjust the imported component position using “Move” or “Rotate” command if needed.

Step 6: Before running simulation, please check whether antenna PINs/PADs are properly placed on the PCB according to the PIN/PAD numbers mentioned in the datasheet.



Step 7: Now, please provide the radiation box and solution frequency for which the antenna was designed for.

N.B: This file can also then be imported on to the any existing CAD files.