



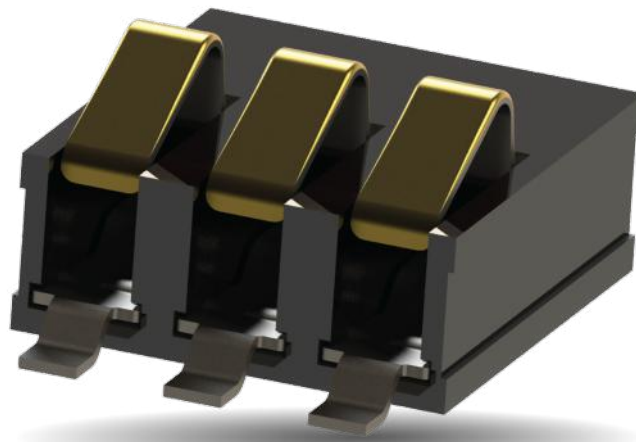
Scan QR Code For  
More Information



STANDARD PRODUCT PORTFOLIO

# COMPRESSION CONTACT TECHNOLOGY

BATTERY CONNECTORS | BOARD-TO-BOARD



## KEY FEATURES:

- > High Reliable, Fatigue Resistant, Gold Plated Beryllium Copper Contacts
- > Enhanced Deflection Capabilities to Absorb Assembly Tolerances
- > Maximized Contact Forces to Meet High Reliability / Harsh Environment Applications

PARALLEL/ STACKING APPLICATIONS	Two Piece 9155-400	Standard 9155-000***	Ultra-Low Profile 9155-100	Reduced 9155-200	Reduced 9155-250	Small Pitch 9155-020
						
Pitch	4.0mm	2.5mm	2.5mm	2.5mm	2.5mm	1.27mm
# of Positions	2, 3, 4, 5, 6	3, 4, 5	2, 3	2, 3, 4, 5	2, 3, 4, 5	2, 3, 4, 5
Compressed/Working Height from PCB Surface	4.1mm to 7.3mm	3.2mm to 5.0mm*	1.3mm to 1.95mm	2.5mm to 3.3mm	4.1mm to 4.9mm	2.5mm to 3.1mm
Deflection Force	70g to 170g	120g to 260g*	40g to 110g	40g to 100g	40g to 100g	30g to 55g
Current Rating	5A/contact	3A/contact	3A/contact	3A/contact	3A/contact	2p-3p : 3A/contact 4p-5p : 2A/contact
Durability	50,000 cycles****	5,000 cycles	5,000 cycles	5,000 cycles	5,000 cycles	15,000 cycles
					STRIPT®	STRIPT®
RIGHT ANGLE / PERPENDICULAR APPLICATIONS	9155-300	9155-500	9155-700	9155-800**	Low Profile Single Contact 9155-600	Pogo 9150-000
						
Pitch	3.0mm	2.5mm	2.0mm	2.0mm	N/A	N/A
# of Positions	2, 3, 4, 5, 6	2, 3, 4, 5	2, 3, 4, 5, 6	2, 3, 4, 5, 6, 7, 8	1	1
Contact Nose Height	4.64mm	2.10mm	2.10mm	1.40mm	N/A	N/A
Working Deflection Range From Connector Face	0mm to 1.0mm	0.5mm to 1.5mm	0.5mm to 1.5mm	0.05mm to 0.55mm	0.75mm to 1.75mm*	1.9mm to 5.5mm*
Deflection Force	40g to 100g	40g to 140g	30g to 90g	40g to 75g	60g to 175g*	25g to 110g*
Current Rating	3A/contact	3A/contact	2p-4p: 2.0A/contact 5p-6p: 1.5A/contact	2p-4p: 2.0A/contact 5p-6p: 1.5A/contact	3A	1A
Durability	5000 cycles	5000 cycles	5000 cycles	5000 cycles	1000 cycles*	10000 cycles

\* Based on multiple part numbers for a selection of heights or platings.  
\*\*Series 9155-800 supports parallel, perpendicular, and co-planar applications.

\*\*\* Reduced nose version available (9155-050 Series).  
\*\*\*\* Series 9155-400 mating cycles based on mating horizontally in the forward direction.